



Waseca County Historical Society *History Notes*

Volume 33 Issue 2

www.historical.waseca.mn.us

April 2011

From the Co-Directors . . .

Dear WCHS Members—Happy Spring to all! This winter was long enough. Many of you joined us for the first Spring Luncheon Lecture of the season with author/gardener, Bonnie Blodgett. The next two are scheduled for the last Thursday of April and May, and they're not only for girls! So call in your reservations now—seating is limited. **Chad Lewis** will talk about his “Minnesota Road Guide to Gangster Hot Spots” on April 28; and **Todd Peterson** will present his book, “Early Black Baseball in Minnesota.” *Find out about the Waseca County connection!* And remember, PAID reservations are due two days before each event.

We've been busy! The WCHS Collection has received many artifact donations, but one stands out—Dorothy Gigeay's 1948 wedding suit complete with alligator shoes and bag, and rhinestone-studded hat. She also donated several other gowns from the 1920s/1930s. *Thank you, Dorothy.* Linda Taylor has assisted many researchers on her days—Thursdays and Fridays in our li-

ABOVE: Dorothy Gigeay views her wedding dress on display
BELOW: Bonnie Blodgett at the April Luncheon-Lecture
RIGHT: BreAnna Morris talks membership with Early Childhood Fair visitor



brary. Member Jan Hunter has been a regular, researching topics of interest for us. During this first quarter of the year we were delighted with visitors all the way from Norway and Japan.

Very soon the WCHS Board of Directors is launching a Membership Campaign through the end of the year. Colorful “Unzie” continues as our mascot—watch for him at our area summer and fall parades, and at the Waseca County Fair. WCHS membership dues *will remain at \$25* for a one-year Individual Membership. And we remind you that you can *join or renew online*. Membership dues play a big role in our annual budget. We are proud to say we currently have over 600 members from all over the county, state and country! Membership dues support WCHS Operations, which cannot be funded by grants. It is critical to gener-

ate support for Operations annually to insure the future of WCHS.

We had a great time at the recent Early Childhood Fair on April 1. Over 300 young families, kids



and grandparents attended. Our youngest volunteer, BreAnna Morris, helped Sheila Morris hand out membership information, jump ropes and yo-yo's.

We want to thank the **Hickorytech Foundation** for a grant that will provide a new wireless PA system for WCHS to use at all of our events wherever we may be—Waseca County Fair, Chautauqua, Ice Harvest, Cemetery Walks, Tag-along Tours, Museum Special Programs and more. And lastly, thanks to our recent Township Board support—thanks to Byron, Freedom, New Richland, Otisco and Iosco Townships!

—Sheila and Joan

History Notes is a publication of the Waseca County Historical Society ©2011
Mailing Address: P.O. Box 314, Waseca, MN 56093
Street Address: 315 Second Avenue N.E.
Phone: 507-835-7700, Fax: 507-835-7811

www.historical.waseca.mn.us

WCHS 2011 Board of Directors:

Jim King: President
Don Zwach: Vice-President
Jim Tippy: Secretary
Tom Piche: Treasurer
Rev. Charles Espe
Boyd Abbe
Henry Lewer
Jean Lundquist
Neta Oelke
Scott Roemhildt
Jerry Rutledge
Rod Searle
Don Wynnemer
Jim Peterson, County Commission
Al Rose, City Council

Staff:

Joan Mooney Co-Director/Programs & Research
program@historical.waseca.mn.us

Sheila Morris Co-Director/Development & Exhibits
photo@historical.waseca.mn.us

Pauline Fenelon Artifacts/Library
collection@historical.waseca.mn.us

Vanessa Zimprich Artifacts/Website
artifact@historical.waseca.mn.us

Linda Taylor Researcher
research@historical.waseca.mn.us

WCHS HOURS:

Museum, Research Library & Gift Shop
Closed Mondays, Open Tuesdays-Fridays, 9-5

Waseca County Historical Society
MUSEUM & RESEARCH LIBRARY

Mission Statement:

To discover and collect all material which may help to establish or illustrate the history of the County or the State.

To provide for the preservation of all historical material and for the appropriate accessibility to such material.

To disseminate historical information and to encourage interest in the past.

To maintain genealogical records.

Event Calendar

Visit us: www.historical.waseca.mn.us
Follow us: [www.twitter.com/wasecahistory](https://twitter.com/wasecahistory)
Like us: www.facebook.com/wasecacountyhistoricalsociety

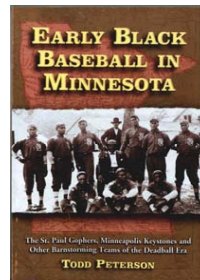
What's Happening in 2011

Ongoing Exhibit: "Waseca County Timeline"

April 24: Easter Sunday

Spring Luncheon-Lecture Series

April 28: Writer **Chad Lewis**, author of *The Minnesota Road Guide to Gangster Hot Spots*.



May 26: Historian/Writer **Todd Peterson**, author of *Early Black Baseball in Minnesota* Featuring Waseca's own EACO's Winning Baseball Team.

The Spring Luncheon Lecture Series is made possible by a grant provided by Prairie Lakes Regional Arts Council from funds appropriated by the Minnesota State Legislature.

Next time:



Janesville Public Carnegie Library

Preservation Efforts in Waseca County

Heritage Preservation Commission:

Les Tlougan, Ranae Schult, Jean Byron, Joan Mooney, Justine Meyer, Bonnie Kastner and Robin Terrell.

Trowbridge Band Shell progress

The Trowbridge Band Shell Evaluation by Thomas Zahn and Bethany Gladhill has been completed. When presented to the State Historic Preservation Office (SHPO) it was determined that the significance of the band stand within the park as a whole did not demonstrate National Register eligibility. The Heritage Preservation Commission (HPC) has decided to designate the band stand locally. The process is presently underway! Zahn and Gladhill are historic architectural consultants who assist communities with historic properties all over Minnesota.



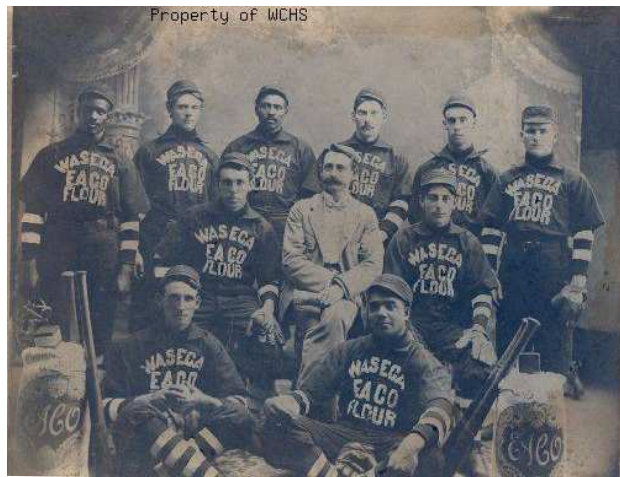
Good News From City Hall

The HPC welcomes Kim Johnson, Planning Director for the City of Waseca. Kim's participation in the HPC has helped tremendously. Kim has worked in Faribault and Northfield, both towns demonstrating the importance of preservation. To her credit, for the first time in the history of the City of Waseca, *preservation* has a chapter in the new City of Waseca Comprehensive Plan. Thanks to Kim and all the hard working members of the HPC, preservation has a voice in Waseca.

EACO'S WINNING BASEBALL TEAM

Waseca's famous baseball team of 1900 and 1901 was the EACO (Everett & Aughenbaugh Company) sponsored team. W. J. Armstrong was their manager, R.P. Ward, president and L.W. Sterling, treasurer. They won the state amateur championship!

They played 57 games that season and lost only 15. Left to right, in the back row is Bob Foote (catcher), Theodore Snyder (right field), Bill Joiner (short stop), C.R. Wattles (first base), S. Foster (left field) and Bob Mackey (third base); middle row: William Foster (center field), W. J. Armstrong (manager), William Veron (second base); front row: William Brisbane (pitcher) and Ed Woods (pitcher). They played the



best clubs in Minnesota, Iowa and Wisconsin, and even journeyed to Chicago to play the Flandreau Indians and the Chicago Marquettes. In 1901 the team reached the peak of its fame, winning the amateur titles in Minnesota, Iowa and South Dakota.

Rivalry between Waseca and Litchfield that year made the state championship series the greatest attraction before or since. Owner of the Lexington Park in St. Paul was offered a percentage to host the game in their park. They refused because they said they couldn't afford to pay the ushers out of what they figured the gate would bring. So Waseca and Litchfield rented the grounds for a flat \$50.00 to the everlasting sorrow of the St. Paul Management.

Special trains were run and the game drew over 10,000 people!

Waseca won the game by a score of 9-2.

Chautauqua 2011 Volunteers Needed!

Chautauqua 2011 will take place on Sunday, July 3 this summer. We are anticipating a good-size crowd, and we will need volunteers to help us with this community event. Those of you who attended last year may have noticed the long food line. In order to better accommodate visitors WE NEED HELP! We have divided the day into two shifts:

For Concessions: 10:30 a.m.-1:30 and 1:30-4:30 p.m.

We are looking for organizations, businesses and groups, old friends and family that would like to work as a team. It gets busy!

Parking and Gate: 9:30 a.m.-12:30 and 12:30-3:30 p.m.

Set-up: 8 a.m., and Take-down: 4:30 p.m.

We are not physically capable of doing this alone. The times needed will be assigned as we get nearer the date. Much of the site set-up is done on the Friday before the event. The tents are erected for us, but we need to place the chairs, transport boxes from the museum, and set up the stage in the woods. On the morning of the event we start around 8 a.m. unloading vehicles, hooking up the electricity, placing signage and setting up concessions. Just as important is take-down and clean-up beginning at 4:30 p.m. We need vehicles to bring everything back to the museum. Tables and chairs need to be folded and left in the tent; and all garbage gathered and properly disposed, etc.

Chautauqua has grown in popularity and the success of the event depends on volunteers. We need strong backs and a few hours of your time. Please let us know if you'd like to help. Contact Joan, Sheila, Vanessa or Pauline at the museum, (507) 835-7700. THANK YOU!



Vern Ferch and others helped us last year!



Waseca County and the Civil War

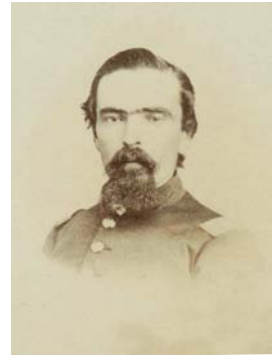
In 1861 the Minnesota Legislature authorized an organization of the militia of the state; however, the treasury of the state was so destitute that no organization was formed at all when the session closed in March. On April 12, Fort Sumter was attacked by rebel forces. President Lincoln immediately issued a call for 75,000 volunteers to defend the life of the nation. Governor Ramsey issued a call for one regiment of volunteer infantry of ten companies to report to General Sanborn at St. Paul. Within two weeks the regiment was full. Waseca County enlisted twenty-two volunteers under Captain Lewis McKune. The regiment was officially organized on April 29 and mustered into service at Fort Snelling. Many more young men from Waseca County would follow. The bloodiest war of all wars combined ended in 1865.

In honor of the 150th anniversary of the Civil War we welcome you to explore the Civil War and how Waseca County was effected. Hundreds of Waseca County men went to fight. Many never returned. We have letters and diaries. Read the original news from the front as it unfolded in the *Waseca Home View*, *Waseca Herald* and *Waseca Journal*.

Perhaps the best Civil War resource we have in our library comes from Sharon Allen. Sharon has been a WCHS volunteer forever. Besides documenting thousands of graves in Waseca County cemeteries, Sharon has tracked and traced the burial site of every Civil War soldier buried in Waseca County. Sharon lists the cemetery and the location of the grave so anyone can find a Civil War soldier.

Another good source of information comes from the Waseca County Veterans Administration Office. Each year a Memorial Day ceremony takes place in front of the Waseca County Courthouse. A program is provided listing all of the Waseca County veterans from all of the wars. The Civil War soldiers buried in Woodville Cemetery are listed as well.

For a closer look at the Civil War, stop in at the Bailey-Lewer History Research Library. You never know what you might find!



From Waseca County—
Captain George T.
White, 10th
Minnesota Volunteer
Infantry, Co. F

Waseca County Civil War
veterans, posed beside
the Waseca County
Courthouse cannon in
1905.

L-R: Geo. A. Smith (Co. A, 8th
Maine Infantry); James H.
Murphy (10th Wisconsin
Battery); Sam Prail (Prochel)
(Co. E, 26th Wisconsin
Infantry); standing, Joseph Young
(Co. A, 96th Illinois Infantry);
seated left of cannon, Daniel
Koechel (Co. D, 4th Wisconsin
H. A.); standing left
of cannon, L. C. Wheelock
(Co. F, 95th Illinois Infantry);
standing right of cannon,
Harry A. Read (Co. F., 28th
Iowa Infantry); sitting right
of cannon, Henry Geist (Co.
C., 4th Wisconsin Cavalry);
Samuel Frost Wyman (Co. I.,
3rd Minnesota Infantry);
Nels Johnson (Co. A., 11th
Wisconsin Infantry); standing,
D. J. Dodge (Co. C., 2nd
Minnesota Cavalry); sitting
in front of Dodge, Wm.
Hoover (Co. G., 5th Minnesota
Infantry); far right, A. F.
Wolcott (Co. K., 1st Minnesota
H. A.).



Into the Collection: ARTIFACTS

Recent artifact donation from Kathy Rosenthal:

Remember “Fiddle Faddle”?

In April we received into the WCHS Collection, a booklet, “Fiddle Faddle”; a collection of weekly newspaper columns about everyday Waseca happenings by second-grade teacher, Lillian Nell that appeared in the Waseca Herald, January 27–September 8, 1949. From her room over Dr. Swenson’s medical office at 222 ½ N. State Street, Lillian wrote about what she observed, and who was who on State Street as well as snippets about her family members. Now and then Lillian shared recipes such this one for Tomato Soup Cake:

TOMATO SOUP CAKE

- ½ cup butter
- 1 cup sugar
- 2 eggs unbeaten
- 1 can tomato soup stirred w/1 tsp soda
- 2 cups cake flour
- 1 tsp baking powder
- 1 tsp cloves
- 1 tsp cinnamon
- 1 tsp nutmeg

Bake in loaf pan. Lemon filling: Boil together 1 cup milk, 1 cup powdered sugar, 2 TBS corn starch. Then add: 2 egg yolks, 1 TBS butter, juice and rind of 1 lemon (1 cup coconut, if desired). Cook 20 min. in double boiler.

From the Collection:

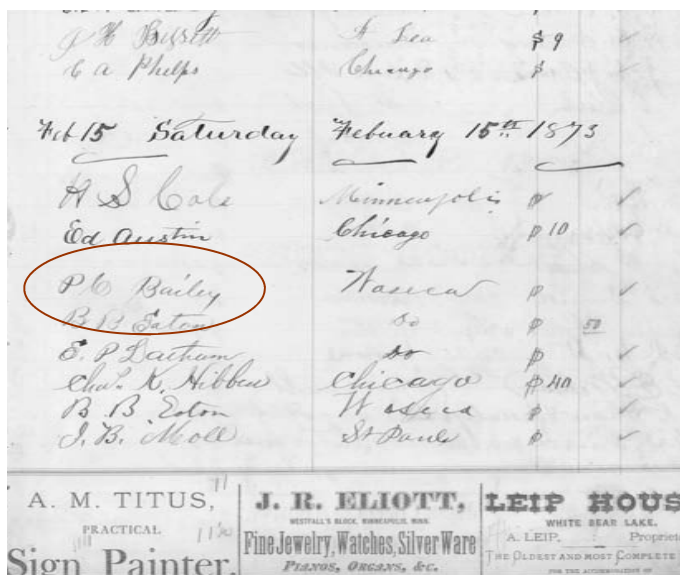
Thanks to Jerry and Linda Rutledge, we had some fairly old film digitized now made safe to view. One film made in 1926 by E.A. Everett showing our own Waseca Troop 85 camping in Waterville, MN. We are researching the names of the boys, but Herman Peterson and Bob Hodgson, scout leaders are recognized in the films. The other films digitized were two Waseca Chamber of Commerce films taken by a young Jerry Rutledge in 1966. Rutledge is editing his film for WCHS. We will decide soon when and how to show these films.

From Glenn and Sharon Ewert, Janesville, MN:

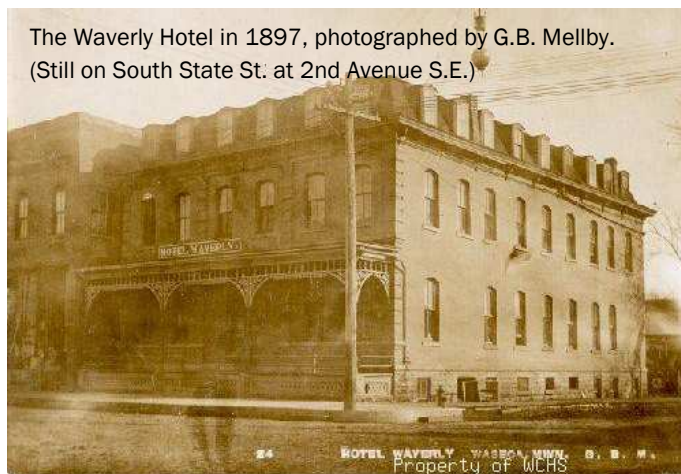
A collection of memorabilia from the Janesville 2006 Sesquicentennial Celebration: Red Wing Pottery jug-bank, plate and crock; T-shirt, baseball cap, Sesquicentennial button, historic Janesville postcards, History of Main Street booklet, 2006 Hee Haw performance DVD, video and cast photo; parade banners featuring Charlie Hofmann and Rena Hinton. *Thanks to the Ewerts.*

From Tony Kruger, Waseca, MN:

Original pages from Waseca’s Waverly Hotel register, 1899; and the Arnold House, 1873—with a few recognizable settler names in their own hand, most notably, “P.C. Bailey”.



The Waverly Hotel in 1897, photographed by G.B. Mellby. (Still on South State St. at 2nd Avenue S.E.)



Thanks to Volunteers, Donors & Members!

As of January 1 to April 13, 2011

MEMBERSHIP

Renewed Membership

Balke, Sidonia
Barber, James
Battenfeld, Myra
Berger, Doris
Boyer, Audra & Tim
Byron, Paul
Collins, Larry
Coyer, Gayle
Crawford, Sharon
Eichorst, Frederick
Eustice, Ronald
Ford, Carol
Forsythe, Diane
Gauger, Barb
Gigeay, Dorothy
Grams, Rosalie
Groskreutz, Dale
Habeck, Bill
Habein Jr., H.C.
Hardin, Carol
Hedstrom, Kristine
Hintz, Joanne
Hunter, Jan
Kamm, Becky
Kinkade, James & Jennifer
Klein, David F.
Kramer, Merila
Miller, Lorraine H.
Moorman, Joanne L.
Morris, Andrea
Morris, Eric J.
Morris, Erin
Nelson, Susan
Olson, Hazel/
Jeanette Swanson
Pommerenke, Lori
Proechel, Bonnie
Purcell, Ron & Pat
Reinecke, Theo
Richard, Deborah
Roesler, Neil
Ryan, Thomas L.
Schultz, Kent & Diane
Srp, Roy
Staley, Jayne
Stoehr, Harlan & Marlene
Tetzloff, Jim
Turner, Marilyn
Turnquist, Helen
Ward, Paul and Doris
Waseca County News
White, Millie
Wilkus, Marilyn
Witt, Norma

Wolff, Dennis & Beth Ann
Yamazaki, Stella

New Lifetime

Webber, Wendy

New Membership

Barnes, Darcy J.
Brandt, Nancy
Buschow, Karen Sanderson
Carlson, Brad & Colleen
Freeman, Janie
Hunt, Andrew
Jewison, Margaret
Kurkoski, Cheryl
Mann, Dennis
Moyer, Brenda
Murray, Maureen
Peterson, Melissa
Scholljegerdes, Sherry
Schuster, Bonnie
Sullivan, Stephen
Sutter, Dorothea

DONATIONS

Un-restricted Donations

Itron Employees & Karen
Lechner, for continuous contributions from their used book sales—to date \$297.79

Brownie/Girl Scout Troop
23816-Mandy Vagts, Leader

Dan & Sue McRaith
Ron & Pat Purcell

Restricted Donations

Jerry & Linda Rutledge for
Digitization of 16mm film
project

Memorials

**In memory of John Arthur
Mulcahey**
by Norma Witt

In memory of Kevin Kanne
by Carol Wobschall

**In memory of Norm
Bohmbach**
by Gene & Kathy Rosenthal

**In memory of Lorraine
Porath**
by Donna Fostveit

In memory of Peter Seys
by Norma Witt

In memory of Reka Neleman
by Henry & Phyllis Lewer

**In memory of Michael
Rosenthal**
by Janette Larson

In memory of Carol Mahler
by Janette Larson

In memory of Douglas Hasner
by Janette Larson

In memory of Homer McIntire
by Donna Fostveit
by Rick & Sheila Morris
by Henry & Phyllis Lewer
by Sigri Hecht

In memory of John McLoone
by Donna Fostveit

In memory of Vivian Peterson
by Donna Fostveit

Appropriations

Iosco Township, \$175
Freedom Township, \$150
Otisco Township, \$300
New Richland Township, \$500
Byron Township, \$200

Un-restricted Grants

Exxon-Mobil (\$500) matched
by volunteer hours of Don
Wynnemer

Restricted Grants

Prairie Lakes Regional Arts
Council—\$1,300 for Spring
Luncheon-Lecture Programs

Hickorytech Foundation—\$1,300
for Wireless PA System

VOLUNTEERS

Thank You Everyone!

Ken & Pug Borgmann, for use
of 8mm Elmo film projector

Mary Amsrud, for use
of Keystone 8mm projector

Rod & Ruth Searle, archives

WHS/YSL students
Karl Jones
Don Wynnemer
Rick Morris
Joe Monahan
Jim Monahan
BreAnna Morris
Barb Cliff

Ice Harvest, February 16:

Carol Raimann, Roundbank/Waldorf
Devyn Rohlk, Roundbank/Waseca
Scott & Amy Roemhildt,
Akorn Creations
Curt Tesch, Tesch Auto Center
Jeff Huelsnitz, Farmamerica
Mike Lund, Farmamerica
Mark Bartelt, City of Waseca
Jolene Gundermann, City of Waseca
Duane Kahnke
Darv Tollefson & STS crew/8
John Pribble
Joel Groebner
Mert Schwarz
Joe Moen
Marita Wadd
Southside Wood Recycling
Warren Viene
Mark Wegner
Jay Dulas, Deputy Sheriff
Chad Davis, Deputy Sheriff
Ken Borgmann
Monika Snyder
Chad Borgmann
Errol Stillings
Shari Roemhildt
NRHEG Schools, Principal Paul Sparby
Mr. Ferber
Mrs. Economy
Mrs. Engel
Waseca CIS, Principal John Huttemier,
6th grade teachers
TEAM Academy Charter School,
Principal Jill Ladwig
Ron Alger
Sleigh & Cutter Committee,
for hot dogs & buns for volunteers



discoverwaseca.com
Waseca Area Tourism & Visitor Board

Waseca County Historical Society

315 2nd Avenue N.E. / P.O. Box 314, Waseca, MN 56093

NON-PROFIT
U.S. POSTAGE
PAID
WASECA, MN
56093
PERMIT 41

CHANGE SERVICE REQUESTED



How did Waseca County participate in the Civil War?

Membership Renewal Date



The last two Spring Luncheon-Lectures . . .

Reserve now, lunch on April 28 will be “Don’t Call Me Chicken” Salad; then how about hot dogs, brats, peanuts & popcorn on May 26. **Come on, guys—don’t be afraid of the word “luncheon.” This one’s not just for girls.** Call now, 835-7700—\$11 for WCHS members; \$16 non-members. PAID reservations DUE two days before each event. See you there! *This activity is made possible by a grant provided by Prairie Lakes Regional Arts Council from funds appropriated by the Minnesota State Legislature.*

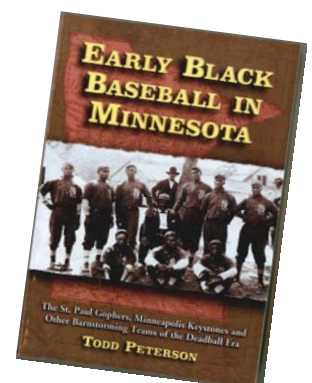
April 28—CHAD LEWIS

The Minnesota Road Guide to Crime Hot Spots

Lewis brings us an interesting perspective of the 1930s, before Minnesota Nice. Why was crime rampant during that decade. Are there Waseca County “hot spots”? Do you have any stories to share?

May 26—TODD PETERSON ***Early Black Baseball in Minnesota***

Peterson is a known authority on the history of black baseball. His work has been published in *Baseball Research Journal* and *Black Ball* and he has exhibited both nationally and internationally. There is a Waseca County connection, do you know what it is?



WAGS RAG

WASECA AREA GENEALOGICAL SOCIETY

The Baily-Lewer Research Center is open for Research Tuesday - Friday 9-12 and 1-5

Gathering Family Memories

By Maureen Taylor, reprinted from *Genealogy.com*

Continued from the Nov 2010 WAGS Rag

Interview Relatives . . .

Identify the individuals in your family that seem to know the most family history. Then either call them or send them a letter or e-mail to set up an appointment to talk. This may be a personal visit, a telephone interview, an e-mail interview, or maybe a plan to set some time aside at the next family event. It is important to develop a list of questions based on the family history you already know so that you can focus the conversation. The answers will help you fill in the blanks on the family tree. For instance, ask for everyone's full name including nicknames and maiden names. Make sure you try to either videotape or tape record these conversations so that you have an accurate record of their comments. An amazing amount of history is passed down orally through the generations. In some families it involves the immigration of the family to America while in others it can be simple things like a family recipe. Read [The Importance of Oral Histories](#) by Lyman Platt to learn more about why this is a primary step for genealogy research. For a sample list of questions and a guide to conducting interviews, check out [Getting Nosy with Aunt Rosie](#).

Use Home Sources . . .

Let family members know that you are interested in seeing the artifacts, photographs and documents that they have in their possession and hearing stories about those items. Artifacts have special meaning in most families, from the sampler passed down through several generations to the souvenir plate your grandparents bought on their honeymoon. You can use those materials to jog memories and direct conversations. A simple family photograph can lead a relative to recount memories about persons and events. Try questioning relatives



about the existence of furniture, jewelry, photographs, documents and special linens. Most of what you'll learn will not appear in any published family history and may not be verifiable, but it will be interesting and fun to hear.



Keep Track of Your Research. . .

As you start to accumulate memories, be sure to keep track of all your sources and data. If you don't already own a genealogical software package, now is the time. Not only do they help you organize your notes by creating family group sheets and charts, the programs also come equipped with extra features. For instance, many genealogical software packages such as [Family Tree Maker](#) allow you to add multimedia objects to your family group sheets so that sound and video can be incorporated into your family tree. The latest version of Family Tree Maker includes a publishing center that enables you to create a family web page directly from the program. As you start to gather stories, memories, artifacts and facts it is necessary to have complete contact or source data for them in case you need to refer to them again. It is very easy to forget who owned the quilt made by your great-great-grandmother or even who knew the details of the argument that divided siblings for several decades.

Acquire a New Hobby from a Family Member. . .

Is there a member of your family that has a talent that has been in the family for several generations? A friend's mother develops her own crochet patterns and creates beautiful items for special events like weddings and baptisms. A number of women who quilt pass this skill along to their daughters. Perhaps the men in your family share a common skill or interest. When you seek out memories, remember to document the talents and expertise of family members. In some families, trade secrets are the basis for a family business. My father learned his trade from his father and uncle who learned from their father who followed in the footsteps of his own father. Each generation inherited techniques and work methods. *More next issue . . .*

Waseca City Census - 1934 Continues

Last	First	Address	Age	Occupation	Own Home	Car	City
Riegler	Mrs. E.	505 4th St SW	68	Cooking	No	No	Waseca
Rieke	Ben	512 7th Ave NW	44	Mgr. Hatchery	No	Yes	Waseca
Rieke	Marian	512 7th Ave NW	39	Housewife			Waseca
Rieke	Robert	512 7th Ave NW	10	Student			Waseca
Rieke	Madge Mary	512 7th Ave NW	7	Student			Waseca
Rieke	Alyson	512 7th Ave NW	6	Student			Waseca
Ringer	Mrs. H.	323 2nd St NW	69	Housewife	Yes	No	Waseca
Ristau	Mrs. Otelia	121 6th Ave NW	61	None	Yes	No	Waseca
Ristau	R. J.	808 7th Ave NE	59	Farmer	Yes	Yes	Waseca
Ristau	Hulda	808 7th Ave NE	58	Housewife			Waseca
Ristau	Marvel	808 7th Ave NE	17	Housemaid			Waseca
Ristau	Iverson Helen	808 7th Ave NE	4	Child			Waseca
Robbers	Marie	124 2nd Ave NE	41	Housework	No	No	Waseca
Robinson	Frank	300 2nd Ave	19	Laborer	No	No	Waseca
Robinson	James	300 2nd Ave	46	Laborer	No	Yes	Waseca
Robinson	Amanda	300 2nd Ave	46	Housewife			Waseca
Robran	Clarence	602 3rd St SW	26	Section	No	No	Waseca
Robran	George	602 3rd St SW	59	Laborer	No	No	Waseca
Robran	Hattie	602 3rd St SW	47	Housewife			Waseca
Robran	Francis	602 3rd St SW	16	Student			Waseca
Robran	Melvin	602 3rd St SW	17	None			Waseca
Robran	Ernie	602 3rd St SW	14	Student			Waseca
Robran	Lawrence	602 3rd St SW	12	Student			Waseca
Robran	Cecil	602 3rd St SW	10	Student			Waseca
Robran	Elaine	602 3rd St SW	6	Student			Waseca
Roe	Mrs. Margaret	712 4th Ave NE	74	None	No	No	Waseca
Roeglin	Mr. Ernest	919 S State St	36	Plasterer	No	Yes	Waseca
Roeglin	Mrs. Ernest	919 S State St	34	Housewife			Waseca
Roeglin	Germaine	919 S State St	6	Child			Waseca
Roeglin	Richard	919 S State St	1	Child			Waseca
Roeglin	Imogene	919 S State St	11	Student			Waseca
Roeglin	Lorraine	919 S State St	13	Student			Waseca
Roemhildt	Hattie	500 N State St	36	Housemaid	No	No	Waseca
Roesler	Adeline	301 4th Ave NE	36	Nurse	No	No	Waseca
Roesler	Mrs. Emma	413 4th Ave NE	60	Housewife	Yes	Yes	Waseca
Roesler	Ethel	413 4th Ave NE	26	None	No	No	Waseca
Roesler Jr	Fred	301 4th Ave NE	30	Accountant	No	No	Waseca
Roesler	Belvie	301 4th Ave NE	32	Housewife			Waseca
Roesler	Joan	301 4th Ave NE	3	Child			Waseca
Roesler	Phillip	301 4th Ave NE	3 Mo	Child			Waseca
Roesler	Fred W.	301 4th Ave NE	72	Retired	Yes	No	Waseca
Roesler	Bertha	301 4th Ave NE	65	Housewife			Waseca
Roesler	Harvey	609 4th Ave SE	30	Truck Driver	No	No	Waseca
Roesler	Magdaline	609 4th Ave SE	25	Housewife			Waseca
Roesler	Marvin	609 4th Ave SE	5	Child			Waseca
Roesler	Jeanette	609 4th Ave SE	2	Child			Waseca