

History Notes

Volume 21, issue 2 Waseca County Historical Society spring 2000

P.O. Box 314, Waseca MN. 56093 (507) 835-7700 <http://www.historical.waseca.mn.us>

From the Desk

of

Margaret

Sinn



We at the museum, had one official day of summer. School let out on Thursday, our summer was Friday. Monday morning, bright and early, street construction began. The first thing they found was street brick one foot below the surface. John

church and into the world of museum with the stroke of his brush. In just under three weeks he climbed down his scaffolding for the last time and his wonderful project was complete. I suspect it is just as he saw it from the first day. Mark said he would paint the dome, and paint it he did. At the end he struck a pretty hard bargain and came out with a ream of paper and the use of the photocopier for awhile. I'll never tell him but I think we came out way, way ahead. Perhaps if he thinks he came out ahead he will now tackle the blue wall.

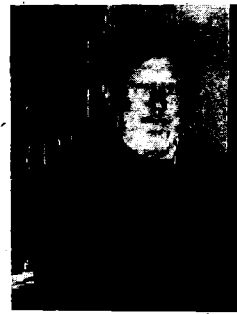
Come and visit Mark's dome. You will be glad you did.

Teskey had warned me on Friday that was going to be the case.

The local history nut that I am, it was hard to hear that wonderful brick being loaded by the scoop into the dump truck and hauled away. We really don't have any complaint with the construction crew. They are trying to make this as painless as possible. They are waist deep in mud and I look at them and think if we were all six years old how wonderful it would be to feel that warm mud squish between our toes. Unfortunately we are older and mud is mud. The research people seem to find us but our numbers at the museum are off. Perhaps this is a blessing in disguise as we are very busy in there right now.

It seems like only yesterday that I was standing under the dome with Mark Barens trying to figure out a way to tell him that I had no money but I would love for him to paint the dome. At this point Mark said, "I know, you want me to paint that dome don't you?" I said, "Yes I would.". Mark said "I will do it". It was decided that he would begin after the last luncheon so we could tear down and remove everything from the auditorium.

The Monday after the last luncheon the "Bailey House Crew" assembled and things began happening. The desk was removed and the scaffolding went up the three stories it would take to raise Mark to the top. Mark with plans in hand came in and the marking of the dome began. The existing four spotlights were removed. It was decided that we wanted lighting around the inside of the dome to light it and better show Mark's work of art. We discovered that we weren't as bright as we thought we were. When the men went to the top they found the old lighting in place and it was exactly like we had in mind for the new lighting. Once all of these chores were completed, Mark's work began. He took the tops of the existing stained glass windows as his pattern and began to paint. He kept telling us that we would like it when it was complete and he was right. I think I speak for all of us when I say that each day we like it better. Perhaps we all had softer colors in mind but Mark blasted us out of the world of



Artist Mark Barens,



Don Wynnemer and George Kastelle putting up the scaffolding.

We have a new web site address and e-mail addresses at WCHS.

<http://www.historical.waseca.mn.us>

e-mail

Margaret Sinn

director@historical.waseca.mn.us

Sheila Morris

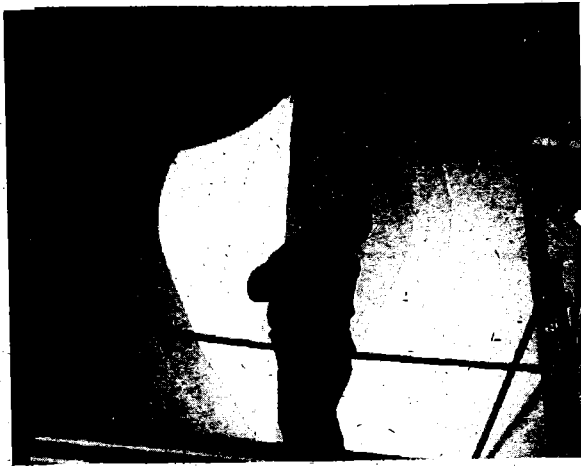
photo@historical.waseca.mn.us

Terri Barens

collection@historical.waseca.mn.us

Joan Mooney

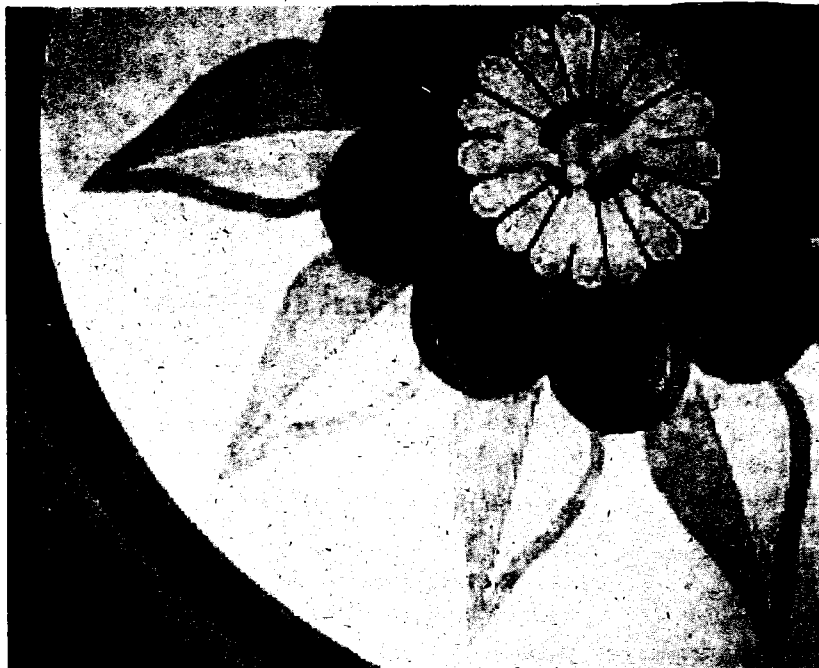
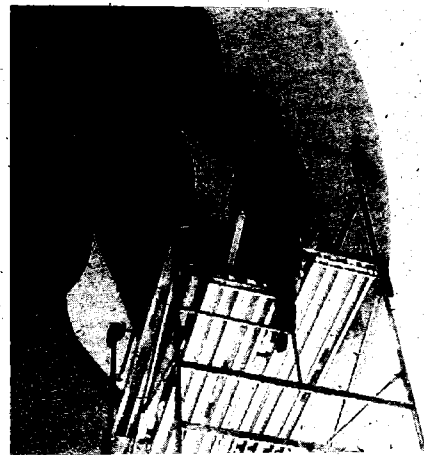
program@historical.waseca.mn.us



Work in progress



Artist Mark Barens painting the petals.



Special thanks to Mark Barens for his generous contribution of time, materials and artistic talent given to the Society for this special project.

Thank you also to Don Wynnemer, George Kastle, Jerry Rutledge, Keith Smith and Phil Allen for their help with the scaffolding and the new lighting.

Be sure to stop in and see the finished painting !!!!!

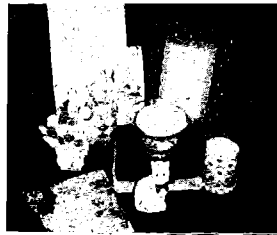
be used for colorful doilies as well . . . We are putting our gift shop "on-line" so you will soon be able to do your shopping over the internet.



Embroidered cotton pillows:
 large-\$18.10, With tassel-\$19.17.
 Small-\$9.59, oblong-\$18.10, Jewelry
 pouch-\$9.05. Eyeglass holder-\$5.75.
 Check book cover-\$5.75.



Passport/ticket holder-
 \$10.65.
 Eyeglass holder-\$12.78,
 Small makeup bag-\$12.78,
 Large cosmetics tote \$30.39,
 zippered tote \$19.17, large



As reported in the *Waseca Journal Radical*, April 27, 1910. 'Work on the Lake Avenue paving contract is moving along at a lively rate. The putting of the curbing has been completed as far as 6th. Street, the start having been made at 10th Street.'

The following information appeared in the *Waseca Herald* on Friday April 29, 1910.

'STREET PAVING STATISTICS'

The following figures obtained from the contractor of the brick paving now on Elm, Wood, 10th. and Lake streets and Lake avenue, comprising in all 20 city blocks, show the proportions of that improvement.. There will be paved 240,000 square feet, requiring 1,200,000 brick, making 180 car loads. The flint brick used is like that on



Volunteers needed !

Volunteers are needed for staffing Hodgson Hall and the schoolhouse at the Waseca County Fair. The fair will take place July 19 through July 23.



If you are interested in helping out please call us at 835-7700 to sign up.

Second Ave. NE. Waseca

is torn up for who knows how long? The sewer is being repaired and the street resurfaced. The



construction crews are working rapidly and are trying to accommodate the neighborhood residents, however it is a mess, so bear with us, we are open, just a little harder to get to.

We captured the work in progress as they overturned the original street brick that lay 12" below the surface. We retrieved the photos in collection documenting the first paved streets in Waseca. The year was 1910. The first street paved was Lake Ave. (now 3rd. Ave NE.)



the Second street paving and comes from Des Moines, Ia. Each brick is 3 1/2 x 4 x 8" and has ridges on the sides to bind the paving when laid. A brick weighs nine pounds and the freight on the entire number used is over \$8,000.



One of our research volunteers, Jeannette Krause, happened upon an article in the July/August 2000 *Saturday Evening Post* magazine entitled "My Father The Post Illustrator".

His name was George Ericson but he also painted under the pseudonym "Eugene Iverd".

From 1926 to 1936 he painted 29 covers for the *Saturday Evening Post* under that name. Under fine art paintings he signed with the name George Ericson. Ericson's brother Carl tells the story of how this other name came to be in an interview in the *Waseca County News*, Oct. 26, 1982, "When we were children, everyone used to call me by my middle name, Iverd. But the first time I went to school, the teacher wanted to know what my first name was. Nobody knew. Well, when my mother told us it was Carl, I had two names. The teacher at school would call me Carl and the kids would call me Iverd. Well one time George and I were on the school yard and he called me over. I told him I wouldn't come until he called me Carl. George asked me if I thought Iverd wasn't a good name, he shouted. Then he pointed to a friend of ours whose name was Eugene. "Some day I'm going to be a famous painter," he said. "And when I'm famous, I'm going to sign my paintings Eugene Iverd. That'll prove to you that Iverd's a good name."

George also removed the "k" from Erickson. He didn't like the letter sticking up in the middle of his name.

Did you know this accomplished artist grew up in Waseca? He was the son of Waseca building contractor John Erickson. The family moved to Waseca when George was five years old. He attended grade school and graduated from Central High. He went on to Yankton, SD and later transferred to the St. Paul Institute of Art for a two year course. He also attended the Philadelphia Academy of Fine Arts. He served in the armed forces during WW1. In 1918 he married Lillian Remund with whom he attended high school in Waseca. He taught art at Fort Snelling with disabled veterans and also did illustrations for the Fort Snelling magazine *Reveille* and the *Christian Herald*. In 1921 he was hired as an art instructor in Erie Pennsylvania where he lived until his death in June, 1936 from pneumonia and a streptococci infection.

Ericson was compared with American master Norman Rockwell, in an article appearing in the *Waseca Journal*. In response he replied "My work was never rated with that of Norman Rockwell's as given in the Journal. I am not fit to wash Norman



Rockwell's brushes — that master of human character!"

Ericson's work lives on and can be found on calendars, beverage cups, greeting cards and even on sweatshirt transfers. The article that appears in the current issue of the *Saturday Evening Post* was written by his youngest daughter, Jean Ericson Sakumura.

Childhood paintings
by George Ericson/
Eugene Iverd, from the
WCHS collection.



We are fortunate to have in collection some of Ericson's work, donated by his brother Carl and sister Helen in 1982. One is a photographic print of a young boy floating on an innertube. The print hangs in the Bailey House Research Library. This painting was also used for the cover of the *Saturday Evening Post*, August 1936. This was the last cover of his career. Ericson died three months before it was published.



Thanks again to Jeanette Krause for bringing in the article and leaving the magazine with us to share with our visitors.

WCHS Information can be heard 24hrs a day by calling HEAR FIRST WASECA @ 835-8000 or free cellular one, # HF, or toll free 1-877-833-8435.

History Notes is published quarterly by the Waseca County Historical Society, P.O. Box 314, Waseca MN. 56093-0314. The membership rate of \$20/year includes a subscription to History Notes. Other membership rate levels are available. Correspondence and address changes should be sent to WCHS at the above address. Museum hours are 8-12 p.m. - 1-5p.m. weekdays (excluding holidays). WCHS phone number is (507) 835-7700. The WCHS web site address is www.historical.waseca.mn.us.

MEET THE BOARD

The Waseca County
Historical Society
Featured Board Member is:

Donald Zwach



Don was raised on a farm near Milroy, Minnesota. His wife, Fran, is originally from Redfield, South Dakota. Fran taught physical education at Sacred Heart Elementary for 24 years. They have two sons, Tom and Mike and two grandchildren.

Don graduated from the Minnesota State University, Mankato in 1961 with a BS degree in Business Education and a MS degree in Business Education in 1969. He taught high school business education at Alberta, Minnesota, Paullina, Iowa, and Waseca for 35 years. Don retired from teaching in 1996. In 1968 he started and developed over the next 6 years the Waseca Community Education Program.

For 8 years Don developed and coordinated the Youth Service And Leadership Program at the Waseca High School, a program that WCHS has greatly benefited from. Don has over the years served on numerous boards and committees. The Waseca Lions Club, Waseca Area Foundation, Waseca United Way, American Cancer Society, Sacred Heart Finance and Social Concerns Committees, Waseca Community Education Advisory Board, Waseca County Historical Society, Waseca County-DFL Party, the Waseca Marching Classic Committee and was campaign treasurer for the former congressman Tim Penny.

As a retired teacher he also is a member of the Waseca Area Retired Teachers.

If Don has any spare time he likes to study his family genealogy and is in the process of writing a family history book. The Zwachs love to travel and recently visited relatives in Germany where he returned to his grandparent's villages.

We appreciate Don's time he gives to WCHS. We can count on Don for fresh ideas and his energetic approach to our projects. Thank you Don Zwach for your time spent with WCHS!

Curator's Corner

Greetings!

For those of you who have not had the opportunity to meet me, my name is Terrie Barends.

I've been a Waseca resident for the past ten years and come to the museum with a background in clothing and textiles, display, and floral design.

In mid February I joined the staff of W.C.H.S. and now take up residency in the museum along with the other artifacts. I've found my new occupation as Collection Processor to be quite fascinating. I'm in the process of acquainting myself with our collection here at W.C.H.S. My initiation into this endeavor was with our wedding gowns. That proved to be quite rewarding. We have a wonderful collection of gowns housed in our museum. The wedding gown show ran the month of April into the second week of May. For those of you who were unable to attend the show and see it in its entirety we've enclosed some photos. Our wedding gown collection spans approximately one-hundred years and ranges from 1855 to 1967. The styles of dresses in our collection include gowns with empire waists, mutton sleeves, Gibson girl influences, to a more traditional/contemporary look evident in our gowns from the 50' and 60's.

Thank you to all of the wedding gown donors who made these wonderful artifacts available for all of us to view.

NEXT EXHIBIT

From the Owatonna Art Center Collection, the whimsical wardrobe of Marianne Young. The Owatonna Art Center has generously lent WCHS their "World Costume Collection". The collection consists of clothing collected from all of Marianne Youngs travels from the late 1960's to 1970's. Marianne was a long time resident of Owatonna. We hope to have this display open in July.



wedding gown of Annabelle Brubaker, 1899



John Dierks and Esther Bauman, 1919



The 19th annual Waseca County 4th Grade Spelling Bee was held at the Waseca County Historical Society on Saturday April 15. All the 4th

grade classroom winners from all the schools in Waseca County were represented.

First place winner was:

Katie Sorenson from Waseca Central Intermediate School.

Second place was :

Abby Phillips from New Richland Hartland Ellendale Geneva School

Third place was :

Jennifer Henderson from Waseca Central Intermediate School.

Cash prizes of \$25, \$15 and \$10 were donated by the Waseca Exchange Club. McDonalds of Waseca donated french fry certificates , Hy Vee of Waseca donated balloons and WalMart of Waseca donated candy.

Refreshments were provided by the Waseca Area Retired Teachers Association. Thank you to all the participants, teachers, sponsors and spectators who attended this event !

The Spring Luncheon Lecture Series

began on Thursday March 30. Our guest speaker was author Anne Gillespie Lewis. The topic was the American Swedish Institute's Turnbull Castle. Anne showed slides from her new book and shared the history of the magnificent building and the man who built it. Anne has also written "*The Minnesota Guide*" which is a great gift for those who like to explore new places and wander the backroads of our beautiful state. Featured in the book is the Waseca County Historical Society and Farm America. Autographed copies are available at the museum for \$21.95 The Perfect gift !

The April luncheon featured the celebrated author, Susan Price Davis. Susan presented slides from her recently published book entitled "Growing Home, Stories of Ethnic Gardeners".

It is always a pleasure to have Susan visit us at WCHS.

The last luncheon was held May 11. The guest speaker was Sharon Erickson Ropes.

Sharon is a master gardener with first hand experience in house and garden restoration. Sharon and her husband have renovated their Victorian home and gardens in Winona Minnesota. Her presentation was entitled "History In Bloom".

WCHS would like to thank the Prairie Arts Regional Art Council for the grant we recieved for the 2000 Luncheon Lecture Series. The \$400 helped with the overall cost of the series. We appreciate thier support.

The following Saturday the annual Mother's Day Plant Sale was held. Unfortunately the weather turned cold, windy and wet, making it difficult to promote garden planting. We deeply appreciate those of you who came out in the wind and rain to support the society.



Bailey House Grand Opening and the Waseca Garden Tour, Sunday, August 6th.

Plans are underway for the Bailey House Grand Opening. The date of the event is Sunday August 6 in conjunction with the Waseca Garden Tour. The landscape restoration at the Bailey House will be featured on the tour as well. This event is free and open to the public. The hours will be from 1-pm.

We are also celebrating the installation of the accessibility ramp that was just completed by our group of volunteers. The crew consisted of Don Wynnemer, Phil Allen, Jerry Rutledge, Keith Smith and George Kastle. Another job well done !

The Waseca County Historical Society Gift Shop

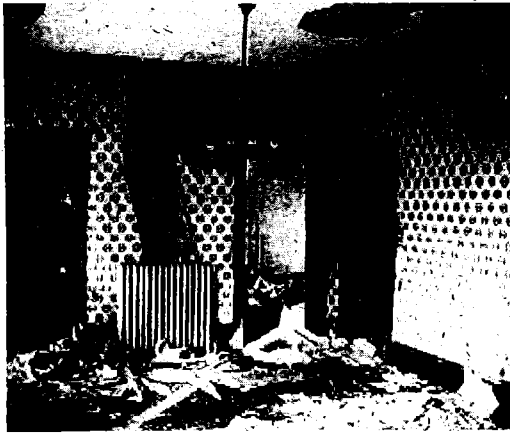
is featuring several new items for spring and summer. We have a new line of reproduction jewelry that is very reasonably priced.

We have a line of travel accessories made from reproduction vintage floral and stripe prints. We have reproduction tin toys as well as metal banks and toys. We have a nice assortment of unusual paper napkins that dress up any table. The napkins can also



(Continued on page 5)

The Bailey House Research Library
GRAND OPENING

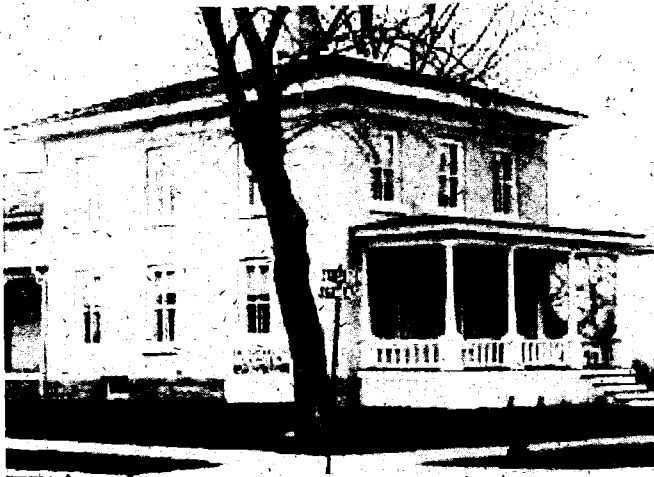


and the

Waseca Garden Club
present the 2000

WASECA GARDEN TOUR

Sunday August 6 from
1 pm. to 5 pm. At the Bailey House
401
2nd. Ave. NE. Waseca.



Please join us in celebrating the completed restoration of this historic building. The gardens will be featured in the Waseca Garden Tour as an example of restoration planting of historic homes. Come and tour the house and grounds and learn how to restore your home or garden. Watch the paper for other gardens participating in the tour.

This event is free and open to the public !

WASECA COUNTY
HISTORICAL SOCIETY
P.O. BOX 314
WASECA MN. 56093

NON-PROFIT
U.S. POSTAGE PD.
WASECA MN. 56093
PERMIT # 41

CHANGE SERVICE REQUESTED



Memorials

*Nels Fostveit, Lillian Foss, Alice Hoehn,
Marlyn Bauman, Dr. Donald Swenson, Whitey Aamot,
Betty Jean Nelson Peterson*

WAGS RAG

WASECA AREA GENEALOGICAL SOCIETY

Meet the Second Wednesday of each month at the Waseca County Historical Society, 7:00 p.m.

Welcome!!

The Waseca Area Genealogical Society welcomes everyone to attend our meetings and events held throughout the year.

July 19 - 23

"County Fair"

Volunteer to help at the County Fair booth.

August 12 - Time to be announced

"Trip to the MN Historical Society"

We will again be researching at the MN Historical Society. Bring your paper, pencil and enthusiasm! If you can drive, call the Historical Society.

September 13 - 7:00 P.M.

"Research Planning for Workshop"

We are planning a workshop in October and need your input. Please come and share your ideas.

October - Date and time to be announced

"Workshop with Mary Bakeman"

Mary Bakeman is from Park Genealogy Supply Company and will be sharing ideas for research. Watch upcoming newsletters for details.

November 8 - 7:00 P.M.

Planning Session for year 2001 programs

December 13th - 7:00 P.M.

Christmas Party - More details in upcoming newsletters.

"The Sunny Side of Genealogy"

Now that I have a computer for my genealogical records, I find that my records are just as confused as before, however, now my confusion is better organized.

Jack W. Briscoe

"I just knew she married that old goat!"



Genealogists

by Roger C. Tripp

*Well ancestors can be very intriguing folks,
When into their Bibles and crypts one pokes,
Their births and deaths and new generations,
Can give us all the utmost of frustrations.*

*Why couldn't they just have written it down,
Even a simple paragraph, sentence or noun.
But they were busy with children and such,
And have left it all for us to retouch.*

*But do we do justice to all of our kin?
Are we now finished or did we just begin?
Where were they born & where did they live?
Or has this escaped us like sand in a sieve?*

*Did they have money and live in big houses?
Or were they poor as proverbial church mouses?
Were they happy with laughter and glee?
Or was hurt and sorrow their real destiny?*

*It really does pain us not to have roots,
So we go on looking for genealogy recruits.
If you want to join us then give us some clues,
And start at whatever places you choose.*

*For our information is spotty at best,
And you might be the one to figure the rest.
So here's to good luck in finding your past,
It takes dedication, valor and being steadfast.*

*Now don't get depressed when you seem to be lost,
It is part of the journey and part of the cost.
But the rewards will certainly be worth the bother,
When stumbling upon your los great-great-grandfather.*

*I'll pass on just one more tad of advice,
And you may well think this a bit overnice.
But in this good family we never permit,
Any children to be listed as illegitimate!*

Waseca City Census - 1934 Continues

Last Name	First Name	Age	Address	City	Occupation	Own Home	Car
Kahnke	Al	69	717 6th Ave. NE	Waseca	Laborer	No	No
Kahnke	Vera	37	717 6th Ave. NE	Waseca	Housewife		
Kahnke	Stanley	15	717 6th Ave. NE	Waseca	None		
Kahnke	Bernadette	17	717 6th Ave. NE	Waseca	None		
Kahnke	Leonard	13	717 6th Ave. NE	Waseca	Student		
Kahnke	Earl	15	717 6th Ave. NE	Waseca	Student		
Kahnke	Kenneth	9	717 6th Ave. NE	Waseca	Student		
Kahnke	Geraldine	3	717 6th Ave. NE	Waseca	Child		
Kahnke	Richard	40	509 8th St. NE	Waseca	Farmer	No	Yes
Kaiser	Angela	32	606 5th St. SW	Waseca	Clerk	No	No
Kaiser	Bernardine	21	313 W Elm Ave.	Waseca	Laborer	No	No
Kaiser	Mrs. Josephine	44	313 W Elm Ave.	Waseca	Housewife	No	No
Kaiser	Margaret	13	313 W Elm Ave.	Waseca	Student		
Kaiser	Joseph	18	313 W Elm Ave.	Waseca	CCC		
Kaiser	L. R.	48	462 4th Ave. NW	Waseca	Mechanic	Yes	Yes
Kaiser	Ida	42	462 4th Ave. NW	Waseca	Housewife		
Kaiser	Doris	15	462 4th Ave. NW	Waseca	Student		
Kaiser	Donald	15	462 4th Ave. NW	Waseca	Student		
Kaiser	John	12	462 4th Ave. NW	Waseca	Student		
Kaiser	Leo	27	606 5th St. SW	Waseca	Clerking	No	No
Kaiser	May	28	606 5th St. SW	Waseca	Clerking	No	No
Kaiser	Mrs. Mary	61	606 5th St. SW	Waseca	Housewife	Yes	Yes
Kakuschke	Julius	74	112 5th Ave. SE	Waseca	Tailor	Yes	No
Kakuschke	Ethel	18	516 2nd St. SW	Waseca	Stenographer	No	No
Kakuschke	M. R.	43	516 2nd St. SW	Waseca	Cashier Depot	No	Yes
Kakuschke	Ruth	38	516 2nd St. SW	Waseca	Housewife		
Kampen	Mrs. Gordon	21	114 6th Ave. NE	Waseca	Housewife	No	No
Kampen	Glendon	1 mo.	114 6th Ave. NE	Waseca	Child		
Kampen	Gordon	1 mo.	114 6th Ave. NE	Waseca	Child		
Kampen	Minnie	21	803 3rd Ave. NE	Waseca	Maid	No	No
Kampion	Dan	47	410 2nd St. NE	Waseca	Farming	No	Yes
Kampion	Nila	62	410 2nd St. NE	Waseca	Housemaid	Yes	No
Kampen	Loral	25	518 3rd St. NE	Waseca	Clerk	Yes	No
Kane	John	59	520 3rd Ave. NE	Waseca	Farming	Yes	Yes
Kane	Josephine	57	520 3rd Ave. NE	Waseca	Housewife		
Kane	Simon	44	709 7th Ave.	Waseca	Laborer	No	No
Kane	Mary	48	709 7th Ave.	Waseca	Housewife		