

**Waseca
County
History
Center**

Waseca County Historical Society and History Center

History Notes

Volume 41, Issue 4, December 2019

www.historical.waseca.mn.us / LOOK FORWARD TO OUR PAST



History Notes is a publication of the Waseca County Historical Society ©2019
P.O. Box 314, Waseca, MN 56093
315 Second Avenue N.E., 507-835-7700
www.historical.waseca.mn.us

WCHS 2019 Board of Directors:

Diane Beckmann, President
Virginia McCarthy, Secretary
Dawn Halgren, Treasurer
Marty Buom
Molly Byron
Dave Dunn
Linda Grant
Dale Groskreutz
Brian Harguth (Waseca Co. Commissioner)
Gregg Johnson
Carol Raimann
Al Rose
Katie Youngberg
Dave Zika

Staff:

Joan Mooney, Executive Director
Grant Administration, Programs & Research
director@historical.waseca.mn.us
joanm@historical.waseca.mn.us

Pauline Fenelon, Artifacts/Library Curator
paulinef@historical.waseca.mn.us

Amanda Larkin, Photograph Archivist
amandl@historical.waseca.mn.us

Jan Hunter, Researcher, Genealogy.
research@historical.waseca.mn.us

Museum Hours

Open Tuesdays-Fridays, 9-5

Bailey-Lewer Library

Open Tuesdays-Fridays, 9-12, 1-5

Traveling? Please call ahead.



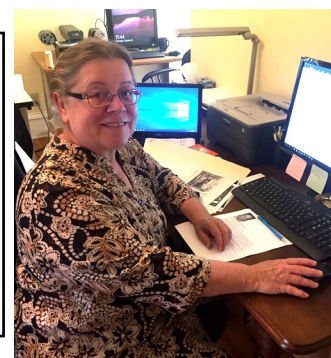
Linda Taylor Retires

We know retirement is to be celebrated, however, letting Linda go is not easy. Linda has done so much for so many people looking for lost family or those new to exploring family history. Linda conducted research for many projects over the years. We miss her and wish her the best in her retirement.



Jan Hunter steps in!

Jan has been with us for a good 5 years, working on special projects and filling in for Linda. Jan is well versed in genealogy and is a skilled researcher. We value her talents, and we are very happy to have her on our team. Welcome Jan!



From the Executive Director

Joan Mooney

The Gift of Membership

Dear Members,

You are important to WCHS. Without our members we would simply not exist. We would not have a facility to care for your 56,570 artifacts. We would not have a research library, we wouldn't have staff and we certainly would not be open 4 days a week year round. We know WCHS is appreciated by the support you provide when you become a member. Since I have been at WCHS our membership has averaged around 400. In the past two years I have noticed a decline in numbers. It's time to rally support with new memberships to build those numbers up again.

In the "history" business, 50 years prior to the current year can be considered historic. In the new year 2020, that year will be 1970! It's true! We are talking about many of us. This is history we can relate to because we lived it. It is ours!

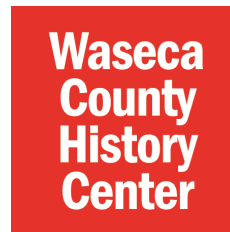
Our job at WCHS is to collect, preserve and present these last 5 important decades. Please help us in our effort to collect, preserve and present your history.

Please consider a gift of Membership for someone you know.

The Waseca County Historical Society Board of Directors and Staff wish you a very Merry Christmas and all the best in the New Year.

Thank you for another wonderful year.

Joan



Coming OF AGE THE 1968 GENERATION

A traveling exhibit from the Minnesota History Center.

Coming in May to the WCHS Museum!

GROWING UP AMIDST political turmoil and revolutionary social change had a lasting impact on teens in the late 1960s. This special exhibit looks at the pivotal events—both far away and close to home—that forever shaped the lives of this generation.



Waseca County History / It's unexpected!

Waseca County Historical Society
MUSEUM & RESEARCH LIBRARY
315 Second Avenue N.E. / Waseca, MN 56093
www.historical.waseca.mn.us / 507-835-7700

Give the Gift of a One-Year Membership \$30

For You: _____ From: _____
Date: _____

More Ways To Give / donate online: www.historical.waseca.mn.us

WCHS Annual Fund Drive: Investing in Your Local History
Yes! I want to make a donation to support the efforts of the WCHS.

_____ \$25 _____ \$50 _____ \$100 _____ \$ 250 _____ \$500
_____ \$1000 Other Amount: \$ _____

***If you have a retirement account from which you must make a RMD (Required Minimum Distribution) before December 31st, please consider a gift to the Waseca County Historical Society.**

Please use my gift for:

_____ Operations _____ Greatest Need _____ Endowments _____ Bailey Lower Library

Name: _____ Address: _____
City: _____ State: _____ Zipcode: _____ Phone: _____
Email: _____

I would like to contribute in Memory or In Honor of: _____

Please notify this individual (s) of my donation:

Name _____
Address _____
City _____ State _____ Zipcode _____



All 2019 donations will be listed in the next WCHS Annual Report.

The Waseca County Historical Society is a Minnesota Non Profit 501 (c)3 organization.

Your charitable donation may be fully tax deductible.

Please consult your financial adviser for tax information.

Season's Greetings from the WCHS Collection

Christmas greeting card from Cities Service gas station owner, Warren Wetzel. Inside, "Wishing you all the joy of the Holiday Season" signed by Warren Wetzel. Ca. 1950



Eugene Iverd Christmas Stamp 1937. George Ericson \ Eugene Iverd sheet of 24 Christmas Seal stamps depicting a colonial town crier, holding bell and lantern, outside in winter. Center sticker is yellow with the TB symbol and in black and red:



"1907 - 1937 Curable".

"Santa Claus says that our assortment of Holiday Goods is the best he has ever seen...
The Wonder Store.
J. L. Davidson, Janesville, Minn."
Ca. 1900



Hodgson Collection. Smoke Rings Hodgson notes: "A Christmas present from Jean Yves LeBihan, Guincamp, France, in 1951. This pipe and snuff box belonged to a great uncle who was a priest." Robert E. Hodgson (1893-1968) was superintendent of the Southern Experiment Station from 1919 to 1960. He promoted modern agricultural methods in Waseca and throughout Minnesota. From 1948 to 1964, Hodgson wrote a column for The Farmer Magazine, and his column "Bob Hodgson Talks" appeared in more than one hundred rural Minnesota newspapers for over 20 years. Hodgson was a member of the Waseca County Historical Society, the Waseca County Horse Thief Detectives, The Boy Scouts and other organizations. Among his many interests were history, nature study and pipe collecting. During World War II, Hodgson wrote a once a month letter to members of Boy Scout Troop 85 who were serving in the armed forces all over the world. The letters were published in the Waseca Journal with separate copies printed and mailed to any Waseca serviceman who wished to receive them. Hodgson's letters maintained the home contacts, helped men keep up on the locations of friends and provided morale-boosting communications for those far away from home.



"Letter Opener Phone Dialer Magnifier. Use it at your desk at home or office or hang it on the wall, keep it handy, it's useful! Compliments of Horn's Lanes. At Christmas time we realize more than ever how much it means to have the Friendship and Good-will of Folks like you. Season's Greetings." New Richland Business: Horn's Bowling Lanes. Donor history: Jean Romine Horn (1917-2008) parents: John and Cora (Sunde) Romine; New Richland High School graduate; Iowa State graduate as dietician; married William Horn in 1945; together the Horns built and operated the Horn Inn in New Richland from 1950-1958; opened Horn's Lanes bowling in 1959 until 1964; Horns were parents to Pam Horn Goehring (Larry) and a son William Jr. who died in infancy.

Season's Greetings from the WCHS Collection



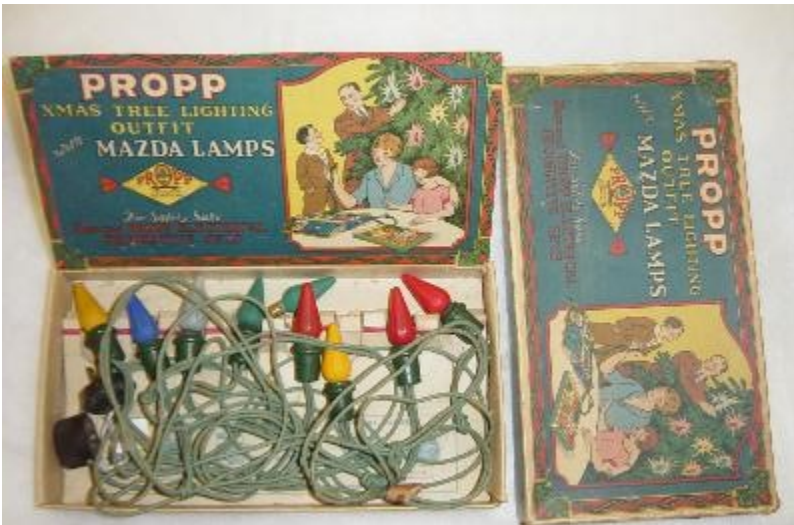
The Local Pub of Alma City Desk Calendar. "The Local Pub, Walt and Alvina, Alma City, Minnesota". 1958
 Comments and History:
 The Local Pub.
 Alton & Freedom Townships. The donors owned Archway Antiques located on the corner of South Main Street in Janesville.



Two Couples Dancing at Horn Inn, located on Highway 13 in New Richland, Minnesota; owned by Bill and Jean Horn; shown are couples dancing, unidentified; some Christmas decorations visible on the wall. Ca. 1952

"Propp XMas Tree Lighting Outfit with Mazda Lamps, for safety sake demand Propp Electrical Decorative Sets". Ca. 1927

The Propp brothers were in offices at 524-528 Broadway in New York City. The Company became one of the largest manufacturer of Christmas lighting outfits the world had ever known. It was hard to imagine that little more than a decade had passed since Morris Propp was running his small gas light fixture operation. This string was used to decorate the Christmas tree in the Alfred and Emma Wetzstein home from the 1930s to 1973. The house is located at 506 3rd Ave., Waseca behind the Congregational Church.



Aquilla Club New Year's Day Hike 1926.
 Waseca Boy Scouts, Troop 85 on their annual New Year's Day winter hike; front row left to right: Herbert Anderson, Robert Bell, Robert Graham, Lauritz Larson, Clifford Wadd, Elmer Groebner. Back row left to right: Melvin Gallagher, Rolland Lorenz, Roy Wendland, Owen Herrmann, Robert Lynn, Leonard Bathke, William Fogarty, Harold Mitchell, Rev. C.M. Brandon.



New WCHS Volunteers

Thanks to Volunteer Randy Indahl

One day last August, a visitor came to the museum specifically to check out our newly opened E. F. Johnson Co. exhibit. Randy, a self-described serious collector and cosmetic restorer of iconic Johnson radios, left the museum about two hours later with an exhibit item, a 1973 Messenger 130 CB Mobile Radio that was in rather “grungy” condition. Our agreement was that he would restore and return the radio in a few weeks. A volunteer project! It was an offer we couldn’t refuse! Later in September, Randy returned with the radio which now presented itself in near mint condition. He described the process of restoration applied to the radio:



As it turns out, the radio was in much more "grungy" condition than I expected. It was necessary to take the cabinet completely apart in order to attempt any successful and meaningful work on it. Each cabinet piece was dealt with as an "individual restoration project", until I was satisfied with the result. One particular challenge was the upper front panel. It has a two-tone painted surface, and the paint is subject to being worn off if I were to be too aggressive in my cleaning and polishing. A great deal of patience was required to get it cleaned down to the original finish, but not destroy it in the process. The radio simply would not be of displayable quality (in my opinion) if I were to wear through the paint.

Another challenge was to get the coiled cord cleaned up. It was covered with some sort of black-ish debris. The handset and other cabinet pieces were carefully cleaned and polished. The radio only had a short 3" pigtail of red wire (power lead wire) so I replaced it with a normal 5' red wire lead. The channel number disc was a challenge all its own. The same black debris seen on the coiled cord was also on the numbered portion of the channel disc. I had to perform a very delicate cleaning procedure to achieve my goal without rubbing the numbers off. I straightened the bent brackets on the back, and cleaned them to make them presentable. I also cleaned the sticky slide switches so that they operated smoothly again.

Finally, I carefully re-assembled the cabinet and replaced the 3 front panel knobs, and I gave the entire radio a final polish coating. Except for the cabinet discoloration from sun exposure, and a few impossible to deal with imperfections here and there, I feel the project came out quite well.

In all seriousness I spent at least 7 hours of pretty intense labor to bring it back as near as I could to a quality worthy of display in the Waseca History Center. It's truly a labor of love.

At the Bailey Lewer Research Library

Karen Lechner is no stranger to WCHS. Karen has been a long time member and volunteer over the years. Karen was one of the original cemetery walkers assigned to documenting information on cemetery stones. This project provides researchers with photographs and locations in most of our county cemeteries and is an important resource available in the library.

Karen also championed her own used book sale on our behalf when she was employed at Itron. She kept it going among her co workers for a good couple of years. Karen has since retired .

Karen is assisting Pauline with indexing the Waseca County Newspapers. She is finishing up the 1960's where Linda Taylor left off. It takes a Waseca native to take on this task as one must be familiar with Waseca County in general.

Welcome Karen and Thank You!

Fourth Quarter Contributions September 14th – December 19th 2019

New / Renewing Sustainer Members

Boyer, Tim and Audra
 Buker, Mark and Barb
 Joecks, Judy
 Klinger, Richard
 King, Jim and Barb
 Madel JR, R.P. and Mary Ann
 Miller, Sarah and Bruce

Volunteers

Beckmann, Dianne
 Buum, Marty
 Dunn, Dave
 Fostveit Donna
 Groskreutz, Dale
 Lechner, Karen
 Raimann, Carol
 Youngberg, Katie
 Zika, Dave

WCHS is a recipient of Thrivent Financial Choice Dollars Program

With Thrivent Choice®, you can recommend where some of Thrivent Financial's charitable outreach funds go. Since 2010, more than \$370 million has been distributed to churches and nonprofits nationwide.

www.thrivent.com

Renewing Members

Allen, Sharon
 Bartelt, Mark and J
 Cervenka, Robert
 Cypher, Lynda
 Dobberstein, Deb and Gary
 Ewert, Margaret
 Fenelon, Kari
 Fenelon, Pauline
 Gauger, Barbara
 Green, Reginald
 Hunt, Nadine
 Hunter, Robert
 Inman, Steven
 Jones, Doug and Lela
 Lewer, Cindy
 Mann, Dennis
 Milkint, Noralee
 Neidt, Millicent
 Oftedahl, Kathleen
 Pascua, Mary
 Peters, Jaqueline A.
 Philipson, Karen
 Poehler, Roslyn
 Roemhildt, Charlene
 Rosenthal, Gregg
 Rudolph, Marlon
 Sankovitz, Thomas and
 Gretchen
 Selvik, Bruce and Debbie
 Smith, Martin
 Smith, Maureen
 Swenson, Lynn and Susan
 Thompson, Richard and Jeanie
 Welch, Eugene
 Yamazaki, Stella
 Youngberg, Katie
 Zellmer, LaVonne

Memorials

In memory of Mary Allen
 by Beckmann, Diane
 by Oftedahl, Kathleen
In memory of William Braun
 by Fury, Ruth
In memory of David Brown
 by Fostveit, Donna
In memory of Verla Conway
 by Fostveit, Donna
In memory of Sally Forrest
 by Thompson, Jeanette
In memory of Fran Gabiou
 by Thompson, Jeanette
In memory of Irma Lorenz
 by Thompson, Jeanette
In memory of Bernice Peterson
 by Berger, Doris
In memory of Jeanette Rosenthal
 by Berg, Darrell and Nancy
 by Berg, Helen
 by Buker, Gary
 by Fostveit, Donna
 by Harty, Amber
 by Magee, Linda
 by Nelson, Blain and Joan
 by Pomeroy, Tracy and Shawn
 by Possehl, Bruce
 by Possehl, Janet
 by Rosenthal, Gene and Kathleen
 by Rosenthal, Tom
 by Tollefson, Nancy
 by Wobschall, Carol
In memory of Bill Schroeder
 by Beckmann, Diane
In memory of Merton Schwarz
 by Grant, Linda
In memory of Beatrice O'Brien Williams
 by Berger, Doris
In memory of Parents and Grandparents
 by Velett, Laurie and Kirk

New Life Members

Linda Lorenz
 Caryn Wendt



Remember the Bridesmaid dresses you were told
 you could wear again for other occasions?

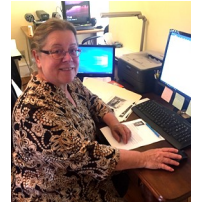
Before they're gone forever give us a call !

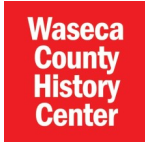
WCHS STAFF

Amanda Larkin
 Photograph Archivist
 & Admin. Assistant

Pauline Fenelon
 Artifact & Library
 Curator

Jan Hunter
 Research
 & Genealogy





Waseca County Historical Society
 315 2nd Avenue N.E. | P.O. Box 314
 Waseca, MN 56093

NON-PROFIT
 U.S. POSTAGE
PAID
 WASECA, MN
 56093
PERMIT 41

RETURN SERVICE REQUESTED

Membership Renewal Date



**Many Thanks to Deb Yess and the
 Waseca High School Choirs for
 performing at the WCHS Holiday
 Open House! It was beautiful!**

