

History Notes



History Notes is a publication of the Waseca County Historical Society ©2020
P.O. Box 314, Waseca, MN 56093
315 Second Avenue N.E., 507-835-7700
www.historical.waseca.mn.us

WCHS 2020 Board of Directors:
Diane Beckmann, President
Dawn Halgren, Treasurer
Marty Buom
Molly Byron
Dave Dunn
Dale Groskreutz
Brian Harguth (Waseca Co. Commissioner)
Gregg Johnson
Carol Raimann
Katie Youngberg
Dave Zika

Staff:
Joan Mooney, Executive Director
Grant Administration, Programs & Research
director@historical.waseca.mn.us

Pauline Fenelon, Artifacts/Library Curator
paulinef@historical.waseca.mn.us

Amanda Larkin, Photograph Archivist
amandl@historical.waseca.mn.us

Jan Hunter, Researcher, Genealogy.
research@historical.waseca.mn.us

Virginia McCarthy, Genealogy
research@historical.waseca.mn.us

Museum Hours
Open Tuesdays-Fridays, 9-5

Bailey-Lewer Library
Open Tuesdays-Fridays, 9-12, 1-5

Traveling?

Please call ahead.



Hofmann Apiaries Phase I Restoration Was funded in part by the Waseca Area Foundation Community Grants and Funds provided by the State of Minnesota from the Arts and Cultural Heritage fund through the Minnesota Historical Society.



From the Executive Director

Joan Mooney

Dear Members,
COVID-19 is still with us as you know.

We are able to open our doors once again with COVID-19 restrictions. If you visit the

WCHS Museum please follow our safe distancing measures.

Museum Visitors must:

Be symptom free

Be wearing a mask

Sanitize hands before entering and after leaving

Please do not touch displays

Please keep a distance of 6 ft. between staff and other visitors

Children 12 and under must be accompanied by an adult

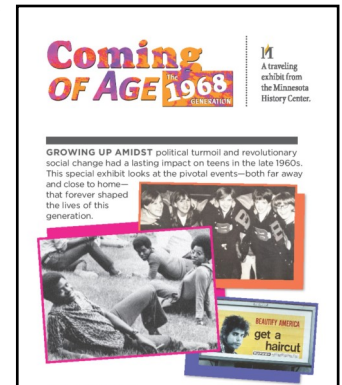
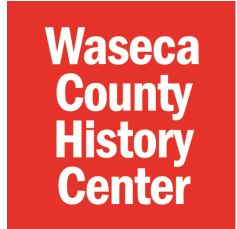
Bailey/Lewer Research Library is open for genealogy by appointment.

Canceled events:

Since our last newsletter we have learned there will be no county fair.

We are still collecting books for a used book sale. The used book sale will be held during the 2021 Waseca County Fair. Our Rock & Roll Revue II fundraiser has been rescheduled for **Friday, June 18 2021** at The Mill. We will have two WHS class reunions in town as well, 1965 and 1966. Mark your calendars!

We are hoping to host the Minnesota Historical Society traveling exhibit: *Coming of Age: The 1968 Generation* originally scheduled for this summer, next summer at the same time.



Hofmann Apiaries Phase I Complete

Yes it's true! Phase I restoration of the Wax Shed and Honey House roof and some windows has been completed! We are currently developing programs for spring 2021.

WE HAVE OPENINGS! The WCHS Board of Directors has 3 open seats. We are seeking representation from the areas of Janesville, Otisco, New Richland and Waldorf to serve on our board. If you are interested in joining this innovative and lively group please contact me for a conversation.

Second Quarter Contributions: March 27th-June 19th, 2020

New / Renewing Sustainer Members

Cawley, Jerry
Lucas, Chuck

Volunteers

Beckmann, Dianne
Buum, Marty
Dunn, Dave
Groskreutz, Dale
Lechner, Karen
Raimann, Carol
Youngberg, Katie
Zika, Dave

New Members

Bartelt, Richard
Brown, Shawn and Steven
Carlson, Brad and Colleen
Fraasch, Jim
Gash, Merideth
Knecht, Susan
Link, Pam
Moe, Diane
Penning, Heather
Swanson, Jeantte
Wilder, Sheryl
Young, Brook-Ann

Appropriations

Byron Township
City of Waseca
Freedom Township
Otisco Township
Woodville Township

WCHS is a recipient of Thrivent Financial Choice Dollars Program

With Thrivent Choice®, you can recommend where some of Thrivent Financial's charitable outreach funds go. Since 2010, more than \$370 million has been distributed to churches and non-profits nationwide.

www.thrivent.com

Renewing Members

Bathke, Dr. Jon and Janis
Born, Rodney
Carlson, Gladys
Groskreutz, Dale
Harter, Lorraine
Hildebrandt, Anita
Hildebrandt, Jeanne
Hintz, Joanne
Hovelsrud, Neil and Susan
Joecks, Becky
Johnson, Maureen
Johnson, Vicki
Larson, Janette
Meyer, Clark
McCarthy, Virginia
McColley, Dallas and Marsha
Richard, Deborah
Stromme, Roy
Taylor, Linda and Gary
Tesch, Marty
Teskey, John
Tollefson, Kathryn
Twisselman, Alan
Wabner, Dave and Berni
Williams, Jack and Mary

Donations

Beckmann, Diane
Beckmann, Andrew
Dunn, Dave and Melissa
Forrest, Dan and Cheryl
Haslip, Kari
Kramer, Karen
Larkin, Amanda
Larkin, Peggy
Lewis, Ray
Misgen, Jim and Joanne
Mooney, Joan
Morris, Sheila
Oss, Jeanna
Zortman, Jeremiah

Memorials

In memory of Sharon Allen
By Mary Lou Ihrke

In memory of Donna Cooper
By Bob and Janette Larson

In memory of Lila Evans
By Bob and Janette Larson

In memory of Scharol Ewest
By Donna Fostveit
By Bob and Janette Larson

In memory of Sean Forrest
By Bob and Janette Larson
By Ruthann and Don Miller II
By Jo Ann and Delency Sutlief

In memory of Ruthann Larson
By Bob and Janette Larson

In memory of Robert Lord
By Bob and Janette Larson

In memory of Shirley Black Madigan
By Donna Fostveit

In memory of Ray Opshal
By Bob and Janette Larson
By Jo Ann and Delency Sutlief

In memory of Rose Pattern
By Bob and Janette Larson

In memory of Robert Peterson
By Nancy Tollefson

In memory of Jane Sutter
By Bob and Janette Larson
By Jo Ann Delency Sutlief

In memory of Paulette Myers Traver
By Donna Fostveit

In memory of LaDonna Wenthold
By Donne Fostveit



Donation Highlights

Over 80 photographs connected to the family names of Papke, Priebe, Krippner, Robinson, Weispfennig, and Knippel were recently donated and are now available on our website database. Two of the photos are shown here:

Papke Sisters: Sarah Weispfennig, Augusta Priebe, Amelia, Robinson, Mary Krippner daughters of Julius and Louisa Papke.

Franklin Papke: 1902-2002. Lifelong resident of Waseca County, son of John and Emma Priebe Papke. Mr Papke served as County Clerk of District Court for 36 years, and he also served on the Board of WCHS for 12 years, during which time he served as treasurer, secretary, and president.

WCHS STAFF

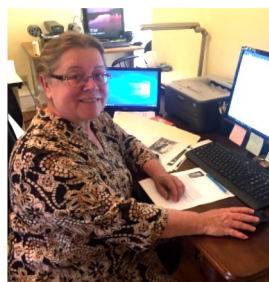
Pauline Fenelon

Artifact & Library
Curator



Jan Hunter

Research & Genealogy



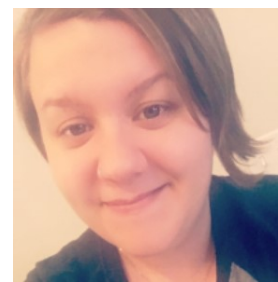
Virginia McCarthy

Research & Genealogy



Amanda Larkin

Photograph Archivist

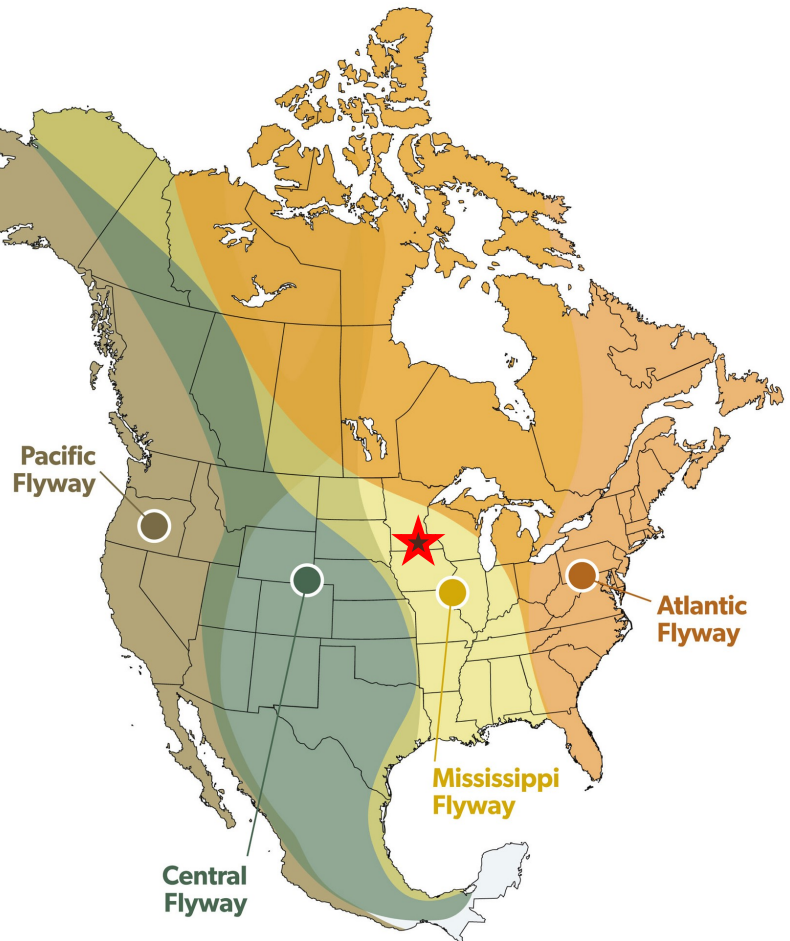


Birding and Social Distancing

In Waseca County!

Unfortunately, the summer of 2020 is going to be spent differently. Not being able to access normal activities has left a lot of people with more free time than they are used to. However, the silver lining is that you can use this time to explore new activities such as bird watching, aka birding. Not only is birding a great way to explore your local parks, lakes, and wildlife, it also encourages you to think about the importance of these places and the preservation that is necessary to keep them accessible to the people. The best part is that birding can be done while social distancing. One cool fact about birding in Minnesota is that we are

part of the Mississippi Flyway, which means more than 325 species make the round-trip right through Minnesota every year. These birds fly from their breeding grounds in Alaska and Canada to their wintering grounds along the Gulf of Mexico and in Central and South America.



If you are interested in learning more about birding but are unsure of where to start there are many helpful websites that you can easily access. The first we would recommend is Audubon.org. This website is filled with information on how to get started, learning how to identify birds, and fun activities that you and children can do. **Another great website you can use is eBird.com because you can use it to discover what birds have been spotted in your area. Not only does it show you which birds have been spotted, but it also tells you where in Waseca County!** You can also click on the listed birds and it will give you information about them such as, what they look like, where they are often found, diet information, and what time of the year they are the most common. The last website that we recommend is brucemckeephotos.com. This website is great for someone who appreciates all aspects of nature. Overall, even though the world we are living in is suddenly filled with uncertainty, now is a great time to explore and appreciate nature.

Influenza of 1918

Researched by Jan Hunter and Virginia McCarthy

Between 1918 and 1919, twenty-eight people died of the “Spanish” influenza in Waseca County. This flu, also known as the 1918 flu pandemic, was an unusually deadly influenza strain caused by the H1N1 influenza A virus.

World War One soldiers were exposed to the illness while in training and on active duty. Fourteen young service-men died from Waseca County:

- Henry Gagner-Vivian Twp
- Severt Loken-New Richland Twp.
- John Barbknecht-Janesville
- Edward Kuehn-Iosco
- August Roeglin-Otisco Twp.
- Conrad Johnson-Blooming Grove Twp.
- John Mathews-Wilton Twp.
- Frank Spoor-Janesville Twp.
- Albert Neumann-New Richland
- William Kaiser-Freedom Twp.
- Willard Mull-Janesville
- Charles Adams-Elysian
- Ludwig Christiansen
- Lawrence Conner-Freedom Twp.

In January of 1920 The Board of Health recommended their “*Closing Order Best Precaution Against Spread of Influenza Epidemic*” for the general population.

Between 1920-1923, thirty-five more Waseca County residents lost their lives to influenza. **Mrs. Erick (Alva) Sjostrand** was seemingly getting better when suddenly she took a turn for the worse and “the death angel’s call was answered” *Waseca Herald, February 5, 1920*. Babies, housewives, firemen, railroad engineers, nurses, farmers, soldiers, mill workers and others lost their lives to influenza. Their names and stories can be found in the county newspapers.

In March 1920, the *Waseca Journal* cited a decline in the number of new cases but warned the public to continue using precautionary measures. Based on Waseca County Death Records, by the end of 1923, deaths due to influenza greatly declined. The pandemic lasted about 15 months from spring 1918 to early summer 1919 and infected 500 million people. 3-5% of the world’s population died.

Chronology

- April 1917: WWI. 378,000 soldiers joined allied Troops.
- June 1917: Men drafted, more soldiers deployed.
- March 1918: Flu like illness is detected in the U.S. and Europe.
- September 1918: First cases of influenza in Minnesota reported in Wells, North Branch and Minneapolis.
- October 1918: The Bureau of Health in St. Paul received reports. 3,238 influenza cases and 219 deaths.
- November 1918: Armistice ending WWI signed. The Bureau of Health in St. Paul reported 3,402 cases of influenza and 385 deaths in Minnesota.
- December 1918: A rise in cases throughout the state occurred in the first few days of December. Public education programs raised awareness of the dangers of coughing, sneezing and the importance of wearing a mask. American Public Health Association encouraged businesses to stagger openings and closing hours. Walking rather than public transportation encouraged.
- May-June 1919: Minnesota death numbers from influenza decreased. One hundred forty seven reported.

Sources estimate the pandemic lasted approximately 15 months.

wikipedia.org

MNOPEDIA *Influenza in Minnesota, 1918* by Mary Laine

The Center for Disease Control and Prevention

MINNPOST *A look Back At the 1918 Flu Pandemic and it’s Impact on Minnesota* by Iric Nathanson.

Thank you to our wonderful volunteers Marty Buum, Jerome Broughten, Dave Dunn, and Dave Zika. They have been hard at work sanding, staining, and painting the Bailey-Lewer Research Library porches and ramp fence. All of their hard work is paying off because everything is looking great!



A yellow poster for a used book sale. At the top, it says "WASECA COUNTY HISTORICAL SOCIETY" in red. Below that, "USED BOOK SALE" is written in large, bold, red letters. A red banner across the middle says "Rescheduled for Fair 2021". Below the banner, it says "JULY 10TH, 2020" and "HODGSON HALL". There is a "NO" sign with a list of items not accepted: Encyclopedias, Text Books, Bibles, Magazines, Records, VHS, Cassettes, or Damaged Books. At the bottom, it says "Call ahead to set up drop off time!! Phone: 507-835-7700" and "WWW.HISTORICL.WASECA.MN.US". The poster features stylized blue and white book spines on the left and right sides.

Unfortunately we have decided to postpone all of our planned activities for the rest of the summer including our used book sale. However, please continue saving those books because we do intend to have the sale during the 2021 fair! We are looking forward to seeing all of you as soon as we can!

WE ARE STILL ACCEPTING USED BOOKS!

**Call to arrange a drop off time at
Hodgson Hall.**

Please do not leave books outside.

835-7700

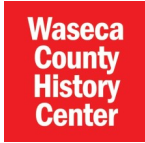
In Memory of Sharon Allen

Sharon was an active volunteer for WCHS for many years.

Sharon was dedicated to documenting cemetery markers in area cemeteries, particularly Woodville Cemetery in Waseca. Perhaps even more challenging was a project Sharon and Deb Dobberstein of the Waseca County Veterans Service Office undertook in 1977. Sharon and Deb began locating the graves of Waseca County soldiers beginning with the War of 1812 through the War in Vietnam. Every year this incredible list is published in the *Waseca Memorial Day Observance Program*.

Sharon was also very active on the "Find a Grave" website doing what she loved to do, helping people locate lost loved ones.

Our condolences to her husband Donald and Family.



Waseca County Historical Society

315 2nd Avenue N.E. | P.O. Box 314

Waseca, MN 56093

NON-PROFIT
U.S. POSTAGE

PAID

WASECA, MN
56093

PERMIT 41

RETURN SERVICE REQUESTED

Membership Renewal Date

